



# UNIVERSITY OF BELIZE LIBRARY

Presented by: Library Staff



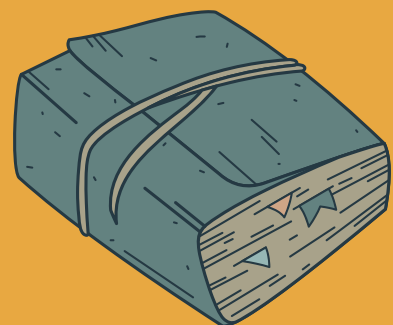
# PRESENTATION OUTLINE



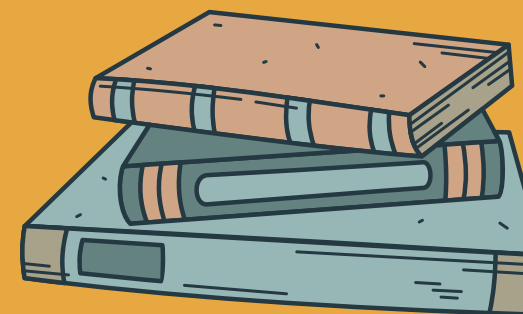
**SERVICES**



**E-RESOURCES**



**STAFF**



**COLLECTION**



# SERVICES

# SERVICES



- Bibliographic Instructions
- Information Literacy
- Information Research
- Computer Access
- Web Connection
- Interlibrary Loan
- Photocopy, Scanning, Binding, lamination,
- Meeting/Creative/Study Space

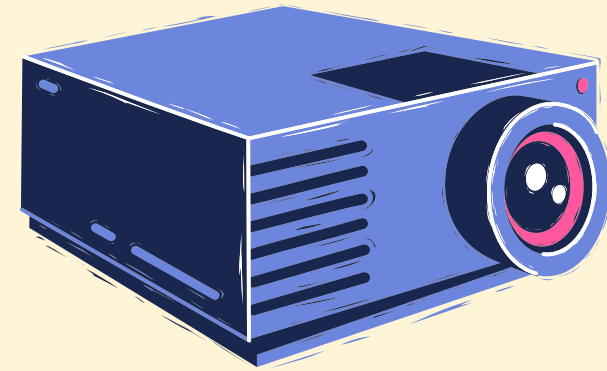
# SERVICES

- Bibliographic Instructions - Teaching and presenting information on library and information resources in a systematic way to library users/patrons. Tutorials conducted upon the lecturer's or student's request such as Ebscohost, KOHA, HINARI, CUBOLA, TEAL, MLA, and APA writing formats.
- Information Literacy - refers to the ability to identify, evaluate, and effectively use information from various sources. It involves having the skills to locate, analyze, synthesize, and critically evaluate information to solve problems, make decisions, and communicate effectively in various contexts.
- Interlibrary loan - Loaning of academic material within the confines of the library
- Computer Access - Courtesy of the lab facility that is under the library's jurisdiction, students are allowed access to the multitude of computers available. This helps facilitates easier and in some cases, more efficient access to research information.
- Meeting/Study Space - The library can be used as a venue for students gathering for creative purposes or to get together in a quiet environment to study for assessments.

# AUDIO VISUAL ROOM

**ELECTRONIC MEDIA POSSESSING BOTH A SOUND AND A VISUAL COMPONENT SUCH AS PRESENTATIONS, LECTURES AND MEETINGS.**

**Central Campus Library :  
Documentary Movie Viewing  
Presentations  
Zoom Class**



**To Book AVR: Ext. 1401  
Contact : Ms. Nicole Gabb  
Seat: 20-30 Max**



# E-RESOURCES



**CUBOLA PUBLISHERS**

## CUBOLA

Supports digital  
access to Belize Books



## HINARI

Several research  
databases supported  
by the WHO



**teeal**

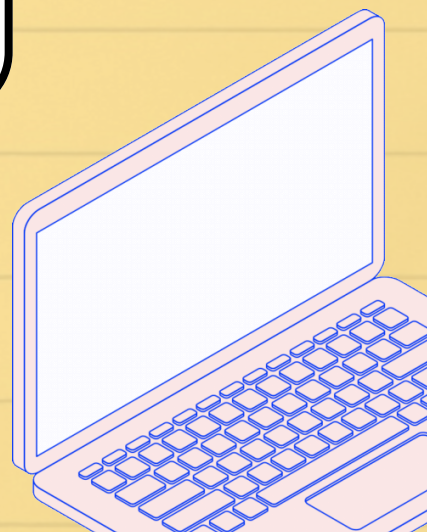
## TEEAL

Research in the  
Agricultural Field



## EBSCOHOST

Credible research &  
eBooks



# E-RESOURCES



## CUBOLA

**OFFERS ACCESS TO THE ELECTRONIC VERSION OF PRINTED BOOKS BY CUBOLA PUBLISHING. THESE ARE BELIZEAN EBOOKS SUCH AS PATAKI FULL, IF DI PIN NEVA BEN & OF HEROES LIZARDS AND PASSION**



## HINARI

**ENABLES ACCESS TO ONE OF THE WORLD'S LARGEST COLLECTIONS OF BIOMEDICAL AND HEALTH LITERATURE. UP TO 13,500 JOURNALS (IN 45 DIFFERENT LANGUAGES), UP TO 60,000 E-BOOKS, AND UP TO 110 OTHER INFORMATION RESOURCES ARE NOW AVAILABLE TO HEALTH INSTITUTIONS IN MORE THAN 115 COUNTRIES, AREAS AND TERRITORIES BENEFITING MANY THOUSANDS OF HEALTH WORKERS AND RESEARCHERS, AND IN TURN, CONTRIBUTING TO IMPROVE WORLD HEALTH.**





# E-RESOURCES



## TEEAL

**TEEAL STANDS FOR "THE ESSENTIAL ELECTRONIC AGRICULTURAL LIBRARY." IT IS A DIGITAL COLLECTION OF AGRICULTURAL SCIENCE JOURNALS PRIMARILY DESIGNED TO SERVE THE NEEDS OF RESEARCHERS, EDUCATORS, AND STUDENTS IN DEVELOPING COUNTRIES WHERE ACCESS TO SCIENTIFIC LITERATURE MAY BE LIMITED.**



## EBSCOHOST

**EBSCOHOST IS A POWERFUL ONLINE RESEARCH DATABASE. IT OFFERS A VARIETY OF PROPRIETARY FULL-TEXT DATABASES FROM LEADING INFORMATION PROVIDERS. THE COMPREHENSIVE DATABASES RANGE FROM ACADEMIC SOURCE COMPLETE, AGRICOLA, BUSINESS SOURCE COMPLETE, CARIBBEAN SEARCH, CINAHL, AND COMPUTERS APPLIED SCIENCES COMPLETE. JUST TO NAME A FEW OF THE DATABASES IN EBSCO. EBSCO HAS AN E-BOOKS COLLECTION THAT OFFERS BOTH ACADEMIC AND PLEASURE READING MATERIALS**





# STUDENT PROCEDURE

In order to rent a book out, kindly follow the steps outlines below:

**1**

Email your query at least 2 months before the semester begins to [ebooks@ub.edu.bz](mailto:ebooks@ub.edu.bz)

**2**

Send the eBook particulars (i.e. Title, Author(s), Edition, Year of Publication, Publisher, and ISBN) and (Lecturer's Name, Lecturer's UB email Address, Course Code, Course Title).

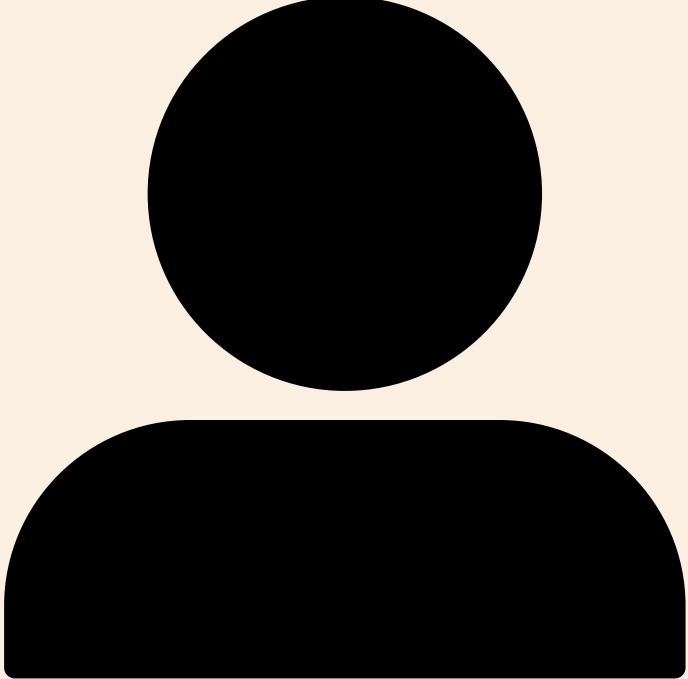
**3**

If the E-text is available, it will be added to the UB inventory and will be available to students

**4**

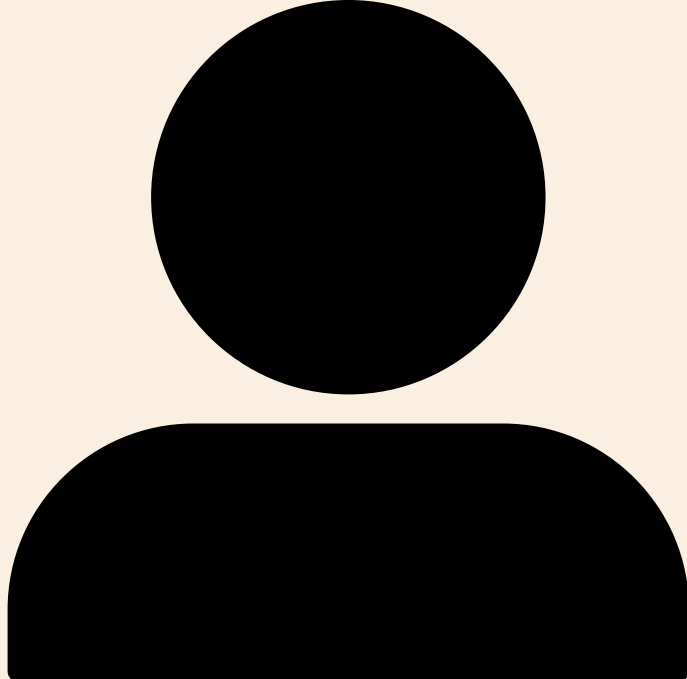
To receive a complimentary code, you must Email: [ebooks@ub.edu.bz](mailto:ebooks@ub.edu.bz)  
Name of Lecturer, UB Email, Course Code & Title

# OUR TEAM MEMBERS



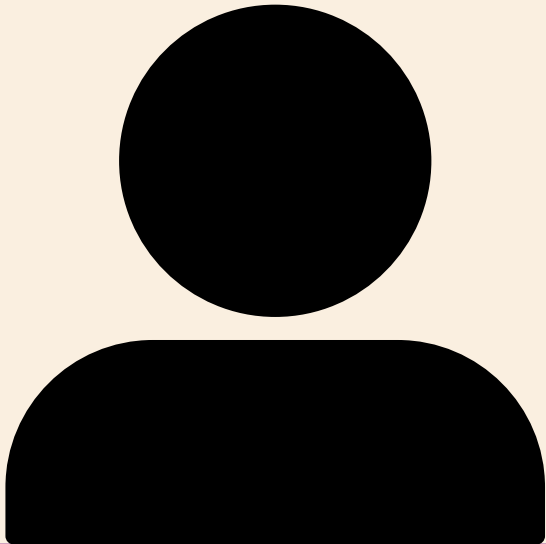
**Trevelee Williams**

Interim Chief Librarian  
Tel.: 822-1000 Ext. 1400



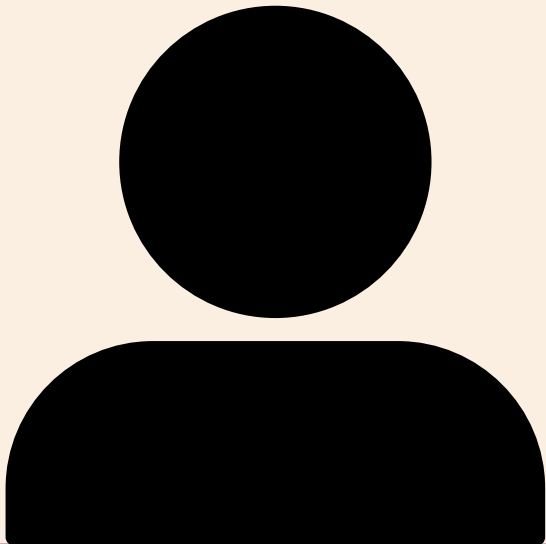
**Chimezirim Amagwula**

E-Service Specialist  
Tel.: 822-1000 Ext. 1405



**Nashiera Bradley**

Librarian  
Tel.: 223-0256 Ext. 2027



**Nicole Gabb**

Librarian  
Tel.: 822-1000 Ext. 1400



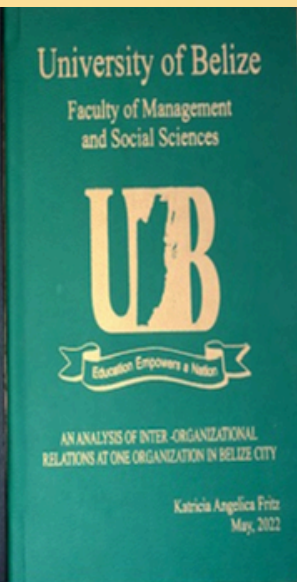
**Ronald Coc**

Librarian  
Tel.: 822-1000 Ext. 1300

# LIBRARY COLLECTIONS



General  
Collection



Periodical  
Collection



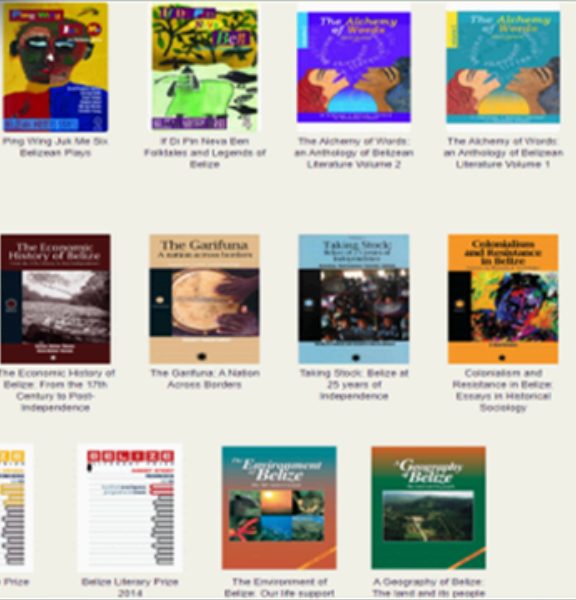
Belize  
Collection



Academic  
Collection



Regional  
Collection

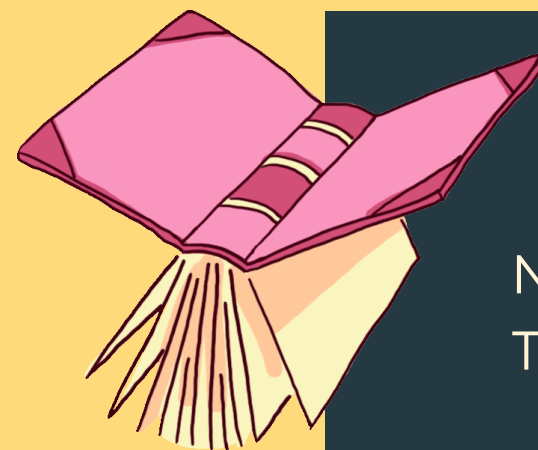


# COLLECTIONS



## GENERAL COLLECTION

Consists of books covering all subject disciplines. Students are allowed to borrow from this collection for up to 28 days not including Saturdays, Sundays, and Public and Bank holidays. After 28 days, a penalty fee of \$0.25 per day will be charged.



## PERIODICAL COLLECTION

Newspapers such as The San Pedro Sun, The Belize Times, Labour Beacon, Liberty, The Reporter and Amandala.

## BELIZE COLLECTION

Books Written by Belizeans and or about Belize.

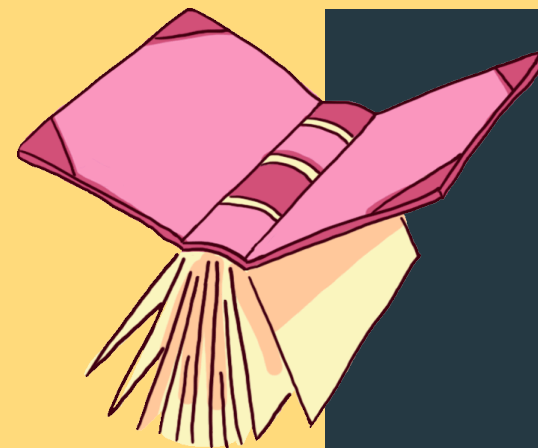


# COLLECTIONS



## ACADEMIC COLLECTION

books specifically curated for student use for courses such as textbooks supplementary material, past student theses and etc



## REGIONAL COLLECTION

refers to books that are specific to a certain country, cities or areas

## PLEASURE READING COLLECTION

consist of fiction, romance, historical fiction, fantasy etc. For the avid readers. Students are allowed to borrow for the same period of 28 days.



The background features four stylized teal clouds with spiral patterns, positioned in the corners of the slide. The central text is in a bold, yellow, serif font.

**THANK YOU FOR  
LISTENING!**

Don't hesitate to ask any questions!